



THE  
**VELARIS**  
RESIDENCES  
NORTH TOWER

# INTRODUCING THE NORTH TOWER

DHSUD LTS NO. 0000030



## DISCLAIMER

While every care has been taken in preparing this material, all plans, details, and specifications contained herein are subject to change without prior notice and do not constitute part of any offer or contract.

Furthermore, the Developer reserves the right to alter, deviate, or dispense with the plans and specifications referred to herein.

*For training purposes and internal use only. Not for circulation.*

# DESIGNED TO INSPIRE

We're setting a new benchmark in luxury real estate.

The Velaris Residences is an award-winning, 3-tower residential enclave located in Bridgetowne – an emerging destination estate within the rising C5 megalopolis.

Drawing upon the success of the South Tower, RHK Land now proudly introduces the North Tower: a beautiful expression of design and luxurious, contemporary living.

This 40-storey tower features a limited collection of masterfully-designed residences that champion a first world lifestyle and our signature intentional design philosophy.

Each residence is thoughtfully laid out to maximize natural light and allow for flexibility in interior design. Spacious indoor patios and balconies provide residents with a private space to take in soaring views around the property. And an extensive line-up of amenities, never before seen in urban property developments in the Philippines, ensures that residents have everything they need to live an inspired and intentional lifestyle.

AN AWARD-WINNING  
RESIDENTIAL ENCLAVE  
NESTLED WITHIN  
THE VIBRANT  
C5 MEGALOPOLIS



*Artist's Perspective*

A BEAUTIFUL  
EXPRESSION OF DESIGN  
AND LUXURIOUS,  
CONTEMPORARY  
LIVING.



*Artist's Perspective*



# LIFE, REVEALED

In architecture and design, as in life, pure and bold intentions hold a potent way of shaping residents' daily experiences. There are places that reveal who we are because they deftly mirror the truest parts of ourselves.

The Velaris Residences is such a place.

There is a two-way test of true elegance: Is it felt and is it effortless? For those who are winning at the game of life and know what it's like to have and to enjoy excellence at every turn, true elegance feels like home.

We believe that your home reflects who you are at heart and who you want to be. All its details are a beautiful revelation of the life that *you* intentionally design.



This is what it feels like,  
To command your day, the moment you rise.  
To feel your pulse and recognize it as 'purpose.'  
To say 'No' to many, so you can say 'Yes' to your chosen few.

To tune out the noise, so you can tune in to your own wisdom.  
To sharpen your game, because it prepares you for a bigger win.  
To let creativity flow, in ways that surprise even yourself.  
To shape a reality guided by your imagination.  
To bask in the unique energy of a city and a renewed world.  
To know true luxury, while securing what's truly priceless.

To choose joy,  
To choose inspiration,  
To choose yourself.

This is what it feels like to live intentionally.  
Where your mind goes, your life follows.

The Velaris Residences North Tower.

Life, Revealed.

# EVERY DAY IS A REVELATION HERE.

We define revelation as a delightful discovery.

And in The Velaris Residences North Tower, we made sure you'll have a plethora of things to discover. Brilliant, brave, and beautiful, the property offers instant excitement the moment the door swings open.

# CHAMPIONING THE FIRST WORLD LIFESTYLE

Stepping inside The Velaris Residences North Tower will feel like entering an exciting new domain. One that is marked by confidence, perpetual possibility, privacy, modernity, and the highest level of comfort and convenience. The space embraces you like an old friend. You are exactly where you need to be.

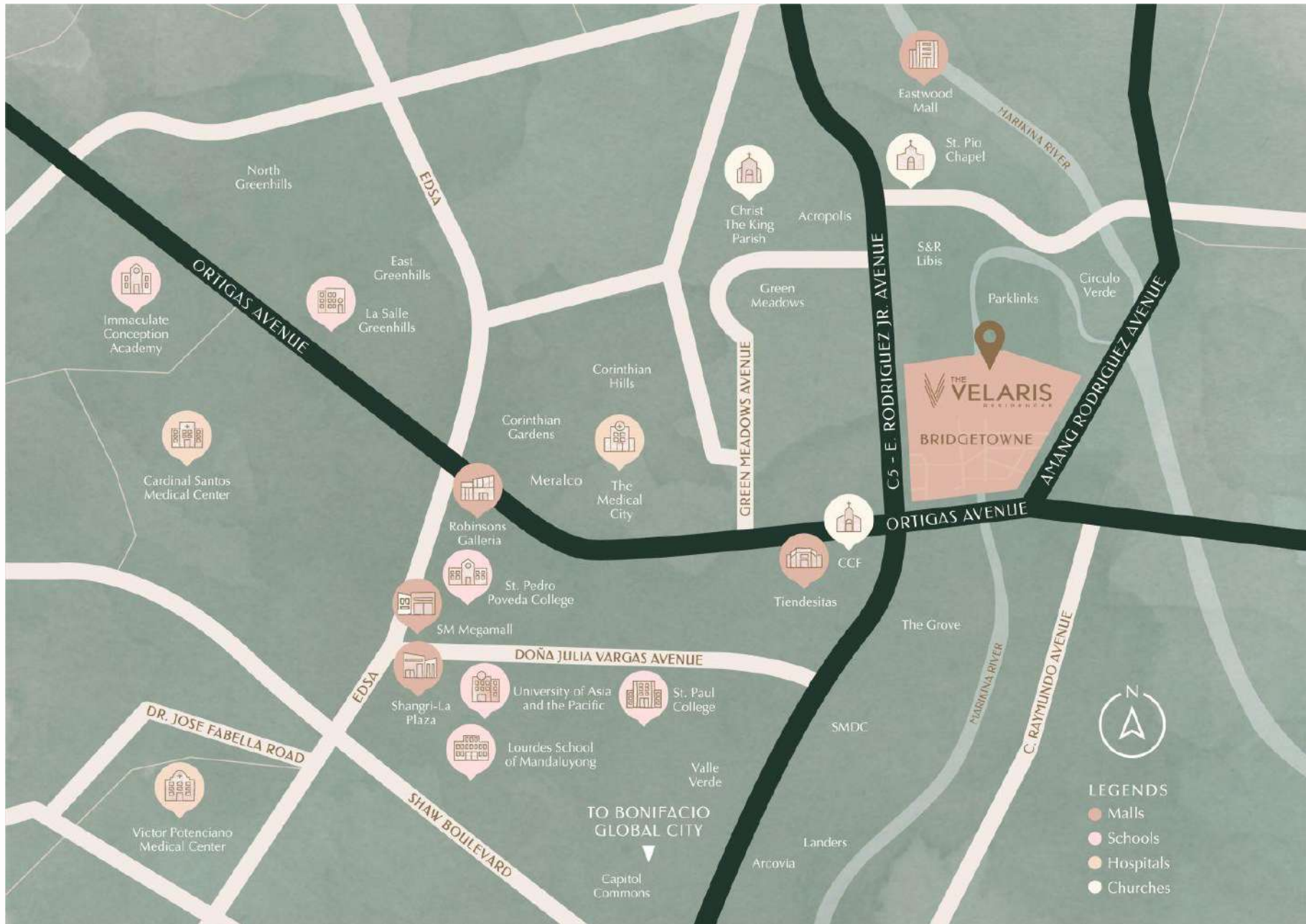
# AMPLIFYING A DYNAMIC URBAN HEARTBEAT

Intentions drive you to the midst of a thriving environment where you're in tune with the beat of a bustling cityscape.

Commanding the best location at Bridgetowne's center, The Velaris Residences stands right beside the area's two magnificent landmarks: the Victor, a 200-foot lighting projection art installation designed by globally recognized artist JEFRE, and Bridgetowne's scenic bridge designed by Mañosa & Co.

To the avid observer, this juxtaposition is fitting. The Velaris Residences is a stunning residential masterpiece that connects you to the heart of a community that perpetually thrives.





# CAPTURING THE PULSE OF A NEW MEGALOPOLIS

An iconic megalopolis is emerging, and The Velaris Residences is at the heart of it.

The C5 growth corridor is experiencing unparalleled levels of economic activity. Along the vibrant C5 Road are several estates by the country's major real estate developers. With Bridgetowne as the worthy centerpiece, these estates make up a megalopolis that will surely present new and interesting recreational and lifestyle options for the community.



---

## PROJECT HIGHLIGHTS

RHK Land's signature intentional design philosophy applied in every room

Champions the first-world lifestyle

Impressive double volume living space in 4BR, townhouse, and penthouse

Spacious indoor patio in the 1BR and 1.5BR units

Extensive line-up of exquisitely-designed amenities

Smart technology in every unit

Contactless lifestyle option via a residents' portal

Five exclusive lobbies at the ground floor ensure a high level of privacy & convenience

Private lifts for 2BR and bigger units

For the 1BR and 1.5 BR, 2 units to 1 elevator ratio per floor

Green building certification

---

### DISCLAIMER

While every care has been taken in preparing this material, all plans, details, and specifications contained herein are subject to change without prior notice and do not constitute part of any offer or contract. Furthermore, the Developer reserves the right to alter, deviate, or dispense with the plans and specifications referred to herein.



# FEATURES & FACILITIES



---

## DEVELOPMENT SUMMARY

|                              |                               |
|------------------------------|-------------------------------|
| NUMBER OF FLOORS             | 40 levels                     |
| NUMBER OF RESIDENTIAL FLOORS | 34 levels                     |
| NUMBER OF UNITS              | 247 units                     |
| UNIT TYPES                   | 1BR – 4BR, TH, PH             |
| SPECIAL UNITS                | 1.5 BR and Bi-level Townhouse |
| UNIT SIZE RANGE              | 77 – 274 sqm (1BR-4BR)        |
| DENSITY PER FLOOR            | 3 to 8 units                  |
| NUMBER OF PARKING FLOORS     | 5 podium, 1 basement          |

---

### DISCLAIMER

While every care has been taken in preparing this material, all plans, details, and specifications contained herein are subject to change without prior notice and do not constitute part of any offer or contract. Furthermore, the Developer reserves the right to alter, deviate, or dispense with the plans and specifications referred to herein.

---

## BUILDING FACILITIES

Arrival plaza and driveway

Carwash bay

Five exclusive lobbies at the ground floor

Eight elevators: one for the central amenities, three for amenities and one-bedroom units, and four exclusive elevators for two-bedroom, three-bedroom, four-bedroom, penthouse, and townhouse

Access card for elevators and units

Smart lockers and mailroom

In-house property management services, concierge, and security

Contactless lifestyle option for residents via a residents' portal

An extensive line-up of luxurious, exquisitely-designed amenities

CCTV monitoring system at lobby, elevators, residential corridors, and amenity areas

Genset to supply 100% back-up power

Centralized fire protection and alarm system

Two (2) fire exit stairs per floor

Seismic Monitoring System (accelerograph)

Performance-based structural design, with seismic and wind tunnel studies

Building is equipped with Transient Voltage Surge Suppressor

Electric Vehicle Charging Station

---

### DISCLAIMER

While every care has been taken in preparing this material, all plans, details, and specifications contained herein are subject to change without prior notice and do not constitute part of any offer or contract. Furthermore, the Developer reserves the right to alter, deviate, or dispense with the plans and specifications referred to herein.



# RESIDENCES

# LIVE WITH INTENTION, INSPIRED BY DESIGN

Freedom to live, the way you imagined. Much more than a place that offers respite from the hectic world, our homes inspire us to stretch our passions, spark our imaginations, and harness the best parts of ourselves as adults and individuals.

The Velaris Residences North Tower offers a collection of spacious, light filled, and beautifully crafted residences. The generous floor plans, idyllic indoor patios; and deliberately heightened ceilings – all play a role in creating a grander external view as much as inspiring a grander view of our own lives.

---

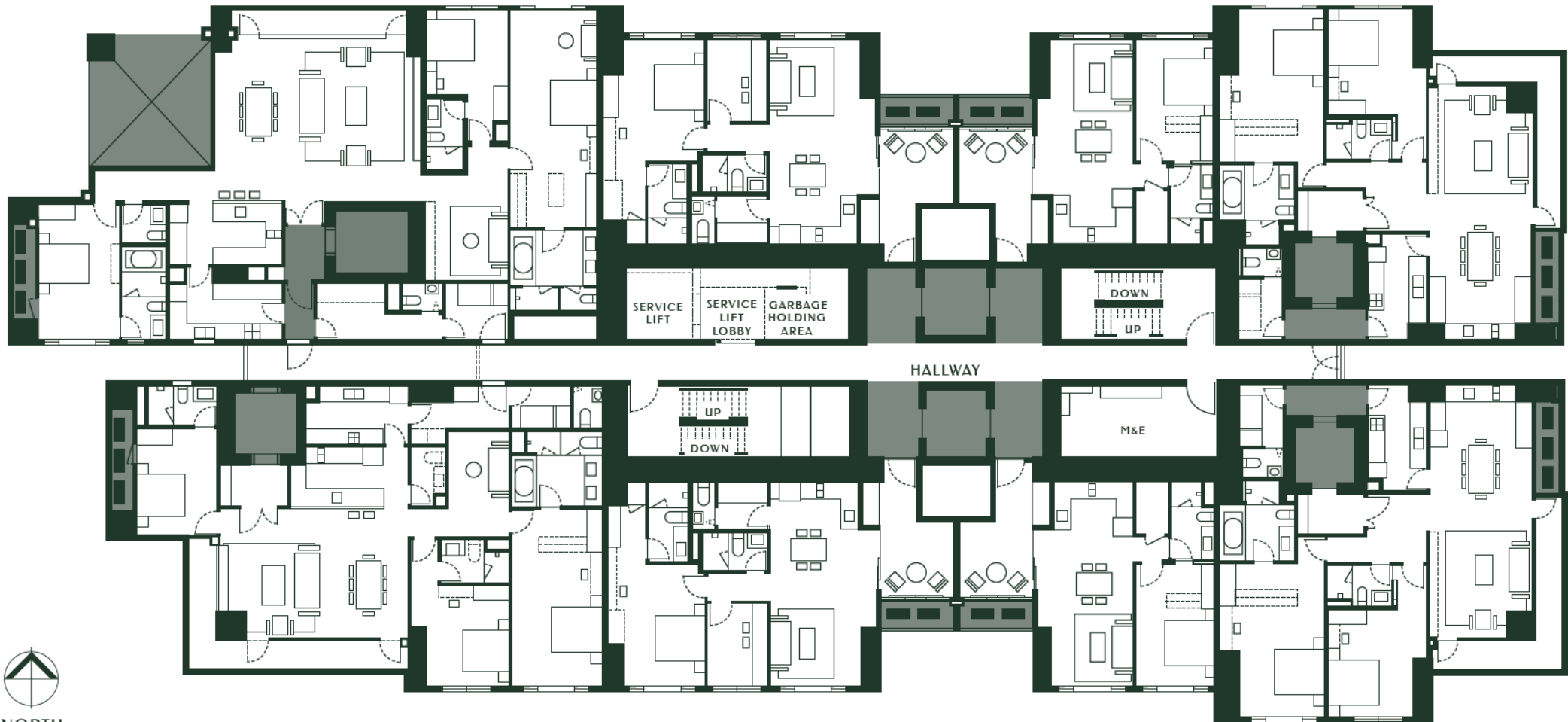
## UNIT OFFERINGS

| UNIT TYPE      | APPROX. AREA          | NUMBER |
|----------------|-----------------------|--------|
| 1 BR           | ±77 sqm               | 60     |
| 1.5 BR         | ±108 sqm              | 60     |
| 2 BR           | ±154 sqm              | 60     |
| 3 BR           | ±200 sqm              | 30     |
| 3 BR (Premium) | ±233.50 sqm           | 15     |
| 4 BR           | ±274.50 sqm           | 15     |
| Penthouse      | ±323.50 - ±401.50 sqm | 4      |
| Townhouse      | ±439 - ±703.5 sqm     | 3      |

---

### DISCLAIMER

While every care has been taken in preparing this material, all plans, details, and specifications contained herein are subject to change without prior notice and do not constitute part of any offer or contract. Furthermore, the Developer reserves the right to alter, deviate, or dispense with the plans and specifications referred to herein.



## TYPICAL FLOOR PLAN

8F, 10F, 12F, 15F, 17F, 19F, 21F, 23F, 26F, 28F, 30F, 32F, 34F, 36F & 38F

### DISCLAIMER

While every care has been taken in preparing this material, all plans, details, and specifications contained herein are subject to change without prior notice and do not constitute part of any offer or contract. Furthermore, the Developer reserves the right to alter, deviate, or dispense with the plans and specifications referred to herein.



## TYPICAL FLOOR PLAN

7F, 9F, 11F, 14F, 16F, 18F, 20F, 22F, 25F, 27F, 29F, 31F, 33F, 35F & 37F

### DISCLAIMER

While every care has been taken in preparing this material, all plans, details, and specifications contained herein are subject to change without prior notice and do not constitute part of any offer or contract. Furthermore, the Developer reserves the right to alter, deviate, or dispense with the plans and specifications referred to herein.



## ONE - BEDROOM SUITE

|                     |                |
|---------------------|----------------|
| <b>TOTAL AREA</b>   | <b>±77 sqm</b> |
| <b>UNIT AREA</b>    | <b>±61 sqm</b> |
| <b>INDOOR PATIO</b> | <b>±16 sqm</b> |

### SUITE FEATURES

|                       |           |
|-----------------------|-----------|
| Living dining kitchen | ± 34 sqm  |
| Master bedroom        | ± 17 sqm  |
| Common T&B            | ± 6.5 sqm |
| Store room            | ± 3.5 sqm |

#### DISCLAIMER

While every care has been taken in preparing this material, all plans, details, and specifications contained herein are subject to change without prior notice and do not constitute part of any offer or contract. Furthermore, the Developer reserves the right to alter, deviate, or dispense with the plans and specifications referred to herein.





ONE BEDROOM SUITE

*Artist's Perspective*



## ONE AND A HALF – BEDROOM SUITE

|                     |                 |
|---------------------|-----------------|
| <b>TOTAL AREA</b>   | <b>±108 sqm</b> |
| <b>UNIT AREA</b>    | <b>±92 sqm</b>  |
| <b>INDOOR PATIO</b> | <b>±16 sqm</b>  |

### SUITE FEATURES

|                       |            |
|-----------------------|------------|
| Living dining kitchen | ± 39.5 sqm |
| Master bedroom        | ± 26 sqm   |
| Master T&B            | ± 6 sqm    |
| Common T&B            | ± 5 sqm    |
| Flexi room            | ± 9 sqm    |
| Utility room          | ± 4.5 sqm  |
| Utility room T&B      | ± 2 sqm    |

#### DISCLAIMER

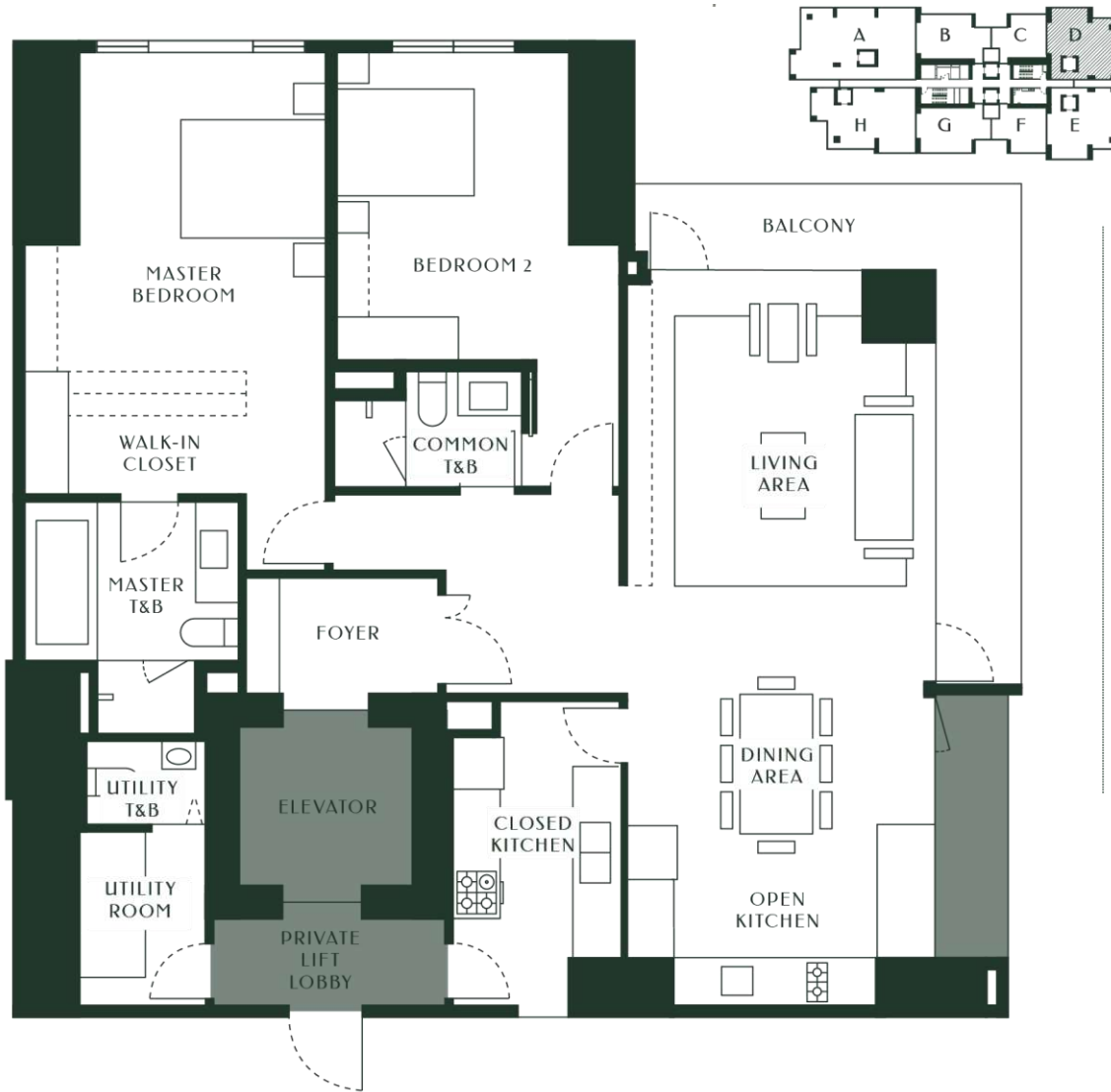
While every care has been taken in preparing this material, all plans, details, and specifications contained herein are subject to change without prior notice and do not constitute part of any offer or contract. Furthermore, the Developer reserves the right to alter, deviate, or dispense with the plans and specifications referred to herein.

SPACIOUS INDOOR  
PATIOS IN 1BR  
AND 1.5BR





ONE AND A HALF BEDROOM SUITE



## TWO – BEDROOM SUITE

**TOTAL AREA** ±154 sqm  
**UNIT AREA** ±140.5 sqm  
**BALCONY** ±13.5 sqm

PRIVATE LIFT LOBBY ±5 sqm

### SUITE FEATURES

|                         |          |
|-------------------------|----------|
| Living dining kitchen   | ±51.5sqm |
| Master bedroom          | ±30 sqm  |
| Master bedroom T&B      | ±9.5 sqm |
| 2 <sup>nd</sup> bedroom | ±21 sqm  |
| Common T&B              | ±5 sqm   |
| Utility room            | ±5 sqm   |
| Utility room T&B        | ±2.5 sqm |
| Closed kitchen          | ±11 sqm  |
| Foyer                   | ±5 sqm   |

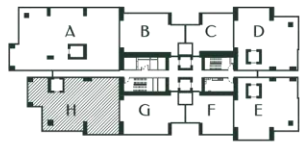
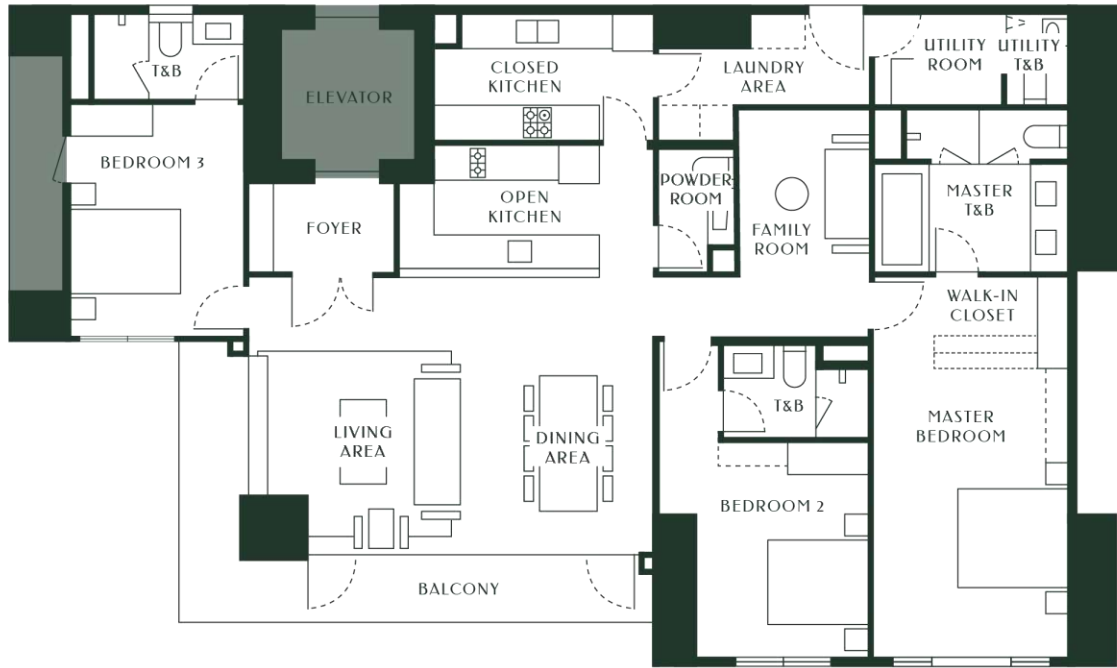
#### DISCLAIMER

While every care has been taken in preparing this material, all plans, details, and specifications contained herein are subject to change without prior notice and do not constitute part of any offer or contract. Furthermore, the Developer reserves the right to alter, deviate, or dispense with the plans and specifications referred to herein.



TWO BEDROOM SUITE

*Artist's Perspective*



## THREE – BEDROOM SUITE

|                   |                   |
|-------------------|-------------------|
| <b>TOTAL AREA</b> | <b>±200 sqm</b>   |
| <b>UNIT AREA</b>  | <b>±184.5 sqm</b> |
| <b>BALCONY</b>    | <b>±15.5 sqm</b>  |

### SUITE FEATURES

|                             |            |
|-----------------------------|------------|
| Living dining kitchen       | ± 56.5 sqm |
| Master bedroom              | ± 27 sqm   |
| Master bedroom t&b          | ± 11.5 sqm |
| 2 <sup>nd</sup> bedroom     | ± 19.5 sqm |
| 2 <sup>nd</sup> bedroom T&B | ± 5 sqm    |
| 3 <sup>rd</sup> bedroom     | ± 15 sqm   |
| 3 <sup>rd</sup> bedroom T&B | ± 6.5 sqm  |
| Utility room                | ± 4.5 sqm  |
| Utility room T&B            | ± 2.5 sqm  |
| Closed kitchen              | ± 10.5 sqm |
| Family room                 | ± 8 sqm    |
| Powder room                 | ± 4 sqm    |
| Laundry area                | ± 9 sqm    |
| Foyer                       | ± 5 sqm    |

#### DISCLAIMER

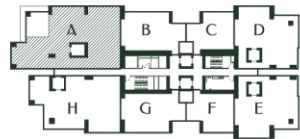
While every care has been taken in preparing this material, all plans, details, and specifications contained herein are subject to change without prior notice and do not constitute part of any offer or contract. Furthermore, the Developer reserves the right to alter, deviate, or dispense with the plans and specifications referred to herein.



THREE BEDROOM SUITE

*Artist's Perspective*





## THREE – BEDROOM (PREMIUM) SUITE

|                   |                   |
|-------------------|-------------------|
| <b>TOTAL AREA</b> | <b>±233.5 sqm</b> |
| <b>UNIT AREA</b>  | <b>±222 sqm</b>   |
| <b>BALCONY</b>    | <b>±11.5 sqm</b>  |

### SUITE FEATURES

|                             |            |
|-----------------------------|------------|
| Living dining kitchen       | ± 83 sqm   |
| Master bedroom              | ± 33 sqm   |
| Master bedroom T&B          | ± 13 sqm   |
| Junior master BR            | ± 19 sqm   |
| Junior master BR T&B        | ± 7.5 sqm  |
| 3 <sup>rd</sup> bedroom     | ± 16 sqm   |
| 3 <sup>rd</sup> bedroom T&B | ± 5 sqm    |
| Utility room                | ± 6.5 sqm  |
| Utility room T&B            | ± 2.5 sqm  |
| Closed kitchen              | ± 11.5 sqm |
| Family room                 | ± 11 sqm   |
| Powder room                 | ± 3 sqm    |
| Laundry area                | ± 11 sqm   |

#### DISCLAIMER

While every care has been taken in preparing this material, all plans, details, and specifications contained herein are subject to change without prior notice and do not constitute part of any offer or contract. Furthermore, the Developer reserves the right to alter, deviate, or dispense with the plans and specifications referred to herein.



*Artist's Perspective*

THREE BEDROOM SUITE (PREMIUM)

# FOUR - BEDROOM SUITE



**TOTAL AREA** ±274.5 sqm  
**UNIT AREA** ±254 sqm  
**BALCONIES** ±20.5 sqm

**PRIVATE LIFT LOBBY** ±7 sqm

## SUITE FEATURES

- Living dining kitchen ± 89.5
- Master bedroom ± 33.0
- Master bedroom T&B ± 13.00
- Junior master BR ± 19.00
- Junior master BR T&B ± 7.50
- 3<sup>rd</sup> Bedroom ± 17.00
- 3<sup>rd</sup> Bedroom T&B ± 4.50
- 4<sup>th</sup> Bedroom: ± 20.00
- 4<sup>th</sup> Bedroom T&B ± 5.00
- Utility room ± 6.50
- Utility room t&b ± 2.50
- Closed kitchen ± 11.50
- Family room ± 11.00
- Powder room ± 3.00
- Laundry area ± 11.00

**DISCLAIMER**

While every care has been taken in preparing this material, all plans, details, and specifications contained herein are subject to change without prior notice and do not constitute part of any offer or contract. Furthermore, the Developer reserves the right to alter, deviate, or dispense with the plans and specifications referred to herein.

IMPRESSIVE  
DOUBLE VOLUME  
LIVING SPACE IN  
4BR, PENTHOUSE,  
& TOWNHOUSE



FOUR BEDROOM SUITE

*Artist's Perspective*



PENTHOUSE SUITE

*Artist's Perspective*



TOWNHOUSE SUITE

Artist's Perspective

---

## TYPICAL UNIT FEATURES

The layout of each unit was created using RHK Land's signature intentional design philosophy. Each unit comes with premium finishes and branded fixtures.

Entrance panel door with viewer

Entrance niche

Intercom

Kitchen cabinets

Kitchen fixtures

Genset to supply 100% back-up power

Fiber to the Home - ready provision (cable, telephone, internet subscriptions c/o unit owner)

Smart home features include digital door lock, light control, and aircon control; smart mirror for 2BR, 3BR, 4BR, penthouse, and townhouse units.

Provision of hot water supply line for kitchen and toilet (excludes water heater)

Space provision for washer / dryer

Split-type ACs in 3BR, 2BR, 1.5BR, and 1BR

Variable Refrigerant Flow (VRF) ACs for 4BR, penthouse, and townhouse

Induction cooktop

Rangehood

Toilet fixtures

Shower enclosure

Bathtub for the masters T&B of 2BR, 3BR Premium, 4BR, penthouse, and townhouse

Double volume living space for 4BR, penthouse, and townhouse

---

### DISCLAIMER

While every care has been taken in preparing this material, all plans, details, and specifications contained herein are subject to change without prior notice and do not constitute part of any offer or contract. Furthermore, the Developer reserves the right to alter, deviate, or dispense with the plans and specifications referred to herein.

---

## UNIT APPLIANCES & FIXTURES

| ITEMS                     | 1BR       | 1.5BR     | 2BR       | 3BR       | 3BRP            | 4BR             | TH              | PH              |
|---------------------------|-----------|-----------|-----------|-----------|-----------------|-----------------|-----------------|-----------------|
| Induction cooktop         | ✓         | ✓         | ✓         | ✓         | ✓               | ✓               | ✓               | ✓               |
| Rangehood                 | ✓         | ✓         | ✓         | ✓         | ✓               | ✓               | ✓               | ✓               |
| Oven                      | N/A       | N/A       | ✓         | ✓         | ✓               | ✓               | ✓               | ✓               |
| Grease trap (kitchen)     | ✓         | ✓         | ✓         | ✓         | ✓               | ✓               | ✓               | ✓               |
| A/c in all rooms          | ✓         | ✓         | ✓         | ✓         | ✓               | ✓               | ✓               | ✓               |
| Kitchen & toilet fixtures | ✓         | ✓         | ✓         | ✓         | ✓               | ✓               | ✓               | ✓               |
| Shower enclosure          | ✓         | ✓         | ✓         | ✓         | ✓               | ✓               | ✓               | ✓               |
| Bathtub                   | N/A       | N/A       | MBR only  | MBR only  | MBR & JMBR only | MBR & JMBR only | MBR & JMBR only | MBR & JMBR only |
| Water heater              | provision | provision | provision | provision | provision       | provision       | provision       | provision       |

---

### DISCLAIMER

While every care has been taken in preparing this material, all plans, details, and specifications contained herein are subject to change without prior notice and do not constitute part of any offer or contract. Furthermore, the Developer reserves the right to alter, deviate, or dispense with the plans and specifications referred to herein.



---

## SMART HOME FEATURES

| ITEMS               | 1BR | 1.5BR | 2BR | 3BR | 3BRP | 4BR | TH | PH |
|---------------------|-----|-------|-----|-----|------|-----|----|----|
| Digital lock system | ✓   | ✓     | ✓   | ✓   | ✓    | ✓   | ✓  | ✓  |
| Light control       | ✓   | ✓     | ✓   | ✓   | ✓    | ✓   | ✓  | ✓  |
| Aircon control      | ✓   | ✓     | ✓   | ✓   | ✓    | ✓   | ✓  | ✓  |
| Smart mirror        | N/A | N/A   | ✓   | ✓   | ✓    | ✓   | ✓  | ✓  |

---

### DISCLAIMER

While every care has been taken in preparing this material, all plans, details, and specifications contained herein are subject to change without prior notice and do not constitute part of any offer or contract. Furthermore, the Developer reserves the right to alter, deviate, or dispense with the plans and specifications referred to herein.

---

## UNIT FINISHES (ONE BEDROOM & ONE AND A HALF BEDROOM)

| PARTICULARS | LIVING / DINING   | BEDROOM                    | OPEN KITCHEN   | TOILET & BATH  | STORAGE       | INDOOR PATIO           |
|-------------|-------------------|----------------------------|--|--|---------------|------------------------|
| Ceiling     | Painted           | Painted                    | Painted  | Painted  | Painted       | Painted                |
| Walls       | Painted           | Painted                    | N/A  | Accent Tiles   | Painted       | Painted                |
| Floor       | Homogeneous Tiles | Engineered Wood            | Homogeneous Tiles  | Homogeneous Tiles  | Ceramic Tiles | Homogeneous Tiles      |
| Others      |                   | High gloss finish wardrobe | Solid surface countertop,<br>Back-painted glass Backsplash,<br>High gloss finish and wood laminate cabinet | Natural stone vanity top,<br>Wood laminate cabinet with mirror |               | Laminated shoe cabinet |

---

### DISCLAIMER

While every care has been taken in preparing this material, all plans, details, and specifications contained herein are subject to change without prior notice and do not constitute part of any offer or contract. Furthermore, the Developer reserves the right to alter, deviate, or dispense with the plans and specifications referred to herein.

---

## UNIT FINISHES (ONE AND A HALF BEDROOM)

| PARTICULARS | LIVING / DINING      | BEDROOM                          | OPEN KITCHEN  | TOILET & BATH   | UTILITY ROOM  | UTILITY ROOM<br>TOILET & BATH | INDOOR PATIO                  |
|-------------|----------------------|----------------------------------|---|---|---------------|-------------------------------|-------------------------------|
| Ceiling     | Painted              | Painted                          | Painted   | Painted   | Painted       | Ceramic Tiles                 | Painted                       |
| Walls       | Painted              | Painted                          | N/A   | Accent Tiles  | Painted       | Ceramic Tiles                 | Painted                       |
| Floor       | Homogeneous<br>Tiles | Engineered<br>Wood               | Homogeneous<br>Tiles  | Homogeneous<br>Tiles  | Ceramic Tiles | Painted                       | Homogeneous<br>Tiles          |
| Others      |                      | High<br>gloss finish<br>wardrobe | Solid surface<br>countertop,<br>Back-painted glass<br>Backsplash,<br>High gloss finish<br>and wood laminat<br>e cabinet | Natural stone<br>vanity top,<br>Wood laminate<br>cabinet<br>with mirror |               |                               | Laminated sho<br>e<br>cabinet |

---

### DISCLAIMER

While every care has been taken in preparing this material, all plans, details, and specifications contained herein are subject to change without prior notice and do not constitute part of any offer or contract. Furthermore, the Developer reserves the right to alter, deviate, or dispense with the plans and specifications referred to herein.

## UNIT FINISHES (TWO BEDROOM)

| PARTICULARS | LIVING / DINING  | BEDROOM                    | OPEN & CLOSED KITCHEN  | TOILET & BATH   | FOYER (when applicable)    | BALCONY           |
|-------------|------------------|----------------------------|--|---|----------------------------|-------------------|
| Ceiling     | Painted          | Painted                    | Painted  | Common T&B - Painted<br>Masters T&B - Painted   | Painted                    | Painted           |
| Walls       | Painted          | Painted                    | Painted  | Common T&B - Homogenous Tiles<br>Masters T&B - Natural Stone  | Wood Laminate              | Painted           |
| Floor       | Homogenous Tiles | Engineered Wood            | Homogenous Tiles   | Common T&B - Homogenous Tiles<br>Masters T&B - Natural Stone  | Natural Stone              | Homogeneous Tiles |
| Others      |                  | High gloss finish wardrobe | Natural stone countertop,<br>Back-painted glass Backsplash,<br>High gloss finish and wood laminate cabinet | Common T&B - Wood laminate with mirror cabinet, Accent tiles wall, Natural stone vanity top<br>Masters T&B - Wood laminate with mirror cabinet, Accent tiles wall, Natural stone vanity top | Wood laminate shoe cabinet |                   |

### DISCLAIMER

While every care has been taken in preparing this material, all plans, details, and specifications contained herein are subject to change without prior notice and do not constitute part of any offer or contract. Furthermore, the Developer reserves the right to alter, deviate, or dispense with the plans and specifications referred to herein.

## UNIT FINISHES (THREE BEDROOM)

| PARTICULARS | LIVING / DINING | ROOM   | OPEN & CLOSED KITCHEN  | TOILET & BATH   | POWDER ROOM  | LAUNDRY AREA & UTILITY ROOM | FOYER (when applicable)   | BALCONY              |
|-------------|-----------------|--|--|---|--|-----------------------------|---------------------------|----------------------|
| Ceiling     | Painted         | Painted  | Painted  | Painted   | Painted  | Painted                     | Painted                   | Painted              |
| Walls       | Painted         | Painted  | Painted  | Bedroom T&B -<br>Natural Stone<br>Utility T&B -<br>Ceramic Tiles  | Natural Stone  | Painted                     | Wood Laminate             | Painted              |
| Floor       | Natural Stone   | Family Room -<br>Natural stone<br>Bedrooms -<br>Engineered<br>wood | Natural Stone  | Bedroom T&B -<br>Natural Stone<br>Utility T&B -<br>Ceramic Tiles  | Natural Stone  | Ceramic Tiles               | Natural Stone             | Homogeneous<br>Tiles |
| Others      |                 | Bedrooms -<br>High gloss<br>finish<br>wardrobe                     | High gloss<br>finish and<br>wood cabinet,<br>Natural stone<br>countertop,<br>Back-painted<br>glass<br>backsplash | Bedroom T&B -<br>Wood laminate<br>with mirror<br>cabinet, Accent<br>tiles feature<br>wall, Natural<br>stone vanity<br>top | Wood laminate<br>with mirror<br>cabinet, Accent<br>tiles feature<br>wall, Natural<br>stone vanity<br>top |                             | Laminated shoe<br>cabinet |                      |

DISCLAIMER

While every care has been taken in preparing this material, all plans, details, and specifications contained herein are subject to change without prior notice and do not constitute part of any offer or contract. Furthermore, the Developer reserves the right to alter, deviate, or dispense with the plans and specifications referred to herein.

## UNIT FINISHES (THREE BEDROOM[PREMIUM], FOUR BEDROOM, TOWNHOUSE, PENTHOUSE)

| PARTICULARS | LIVING / DINING                  | ROOM   | KITCHEN  | TOILET & BATH   | POWDER ROOM  | LAUNDRY AREA &<br>UTILITY ROOM | BALCONY              |
|-------------|----------------------------------|--|--|---|--|--------------------------------|----------------------|
| Ceiling     | Painted                          | Painted  | Painted  | Painted   | Painted  | Painted                        | Painted              |
| Walls       | Painted                          | Painted  | Painted  | Bedroom T&B -<br>Natural Stone<br>Utility T&B -<br>Ceramic Tiles  | Natural Stone  | Painted                        | Painted              |
| Floor       | Natural Stone                    | Family Room -<br>Natural stone<br>Bedrooms -<br>Engineered<br>wood | Open Kitchen -<br>Natural Stone<br>Closed<br>Kitchen-<br>Homogeneous<br>Tiles                                    | Bedroom T&B -<br>Natural Stone<br>Utility T&B -<br>Ceramic Tiles  | Natural Stone  | Ceramic Tiles                  | Homogeneous<br>Tiles |
| Others      | Wood<br>Laminate shoe<br>cabinet | Bedrooms -<br>High gloss<br>finish<br>wardrobe                     | High gloss<br>finish and<br>wood cabinet,<br>Natural stone<br>countertop,<br>Back-painted<br>glass<br>backsplash | Bedroom T&B -<br>Wood laminate<br>with mirror<br>cabinet, Accent<br>tiles feature<br>wall, Natural<br>stone vanity<br>top | Wood laminate<br>with mirror<br>cabinet, Accent<br>tiles feature<br>wall, Natural<br>stone vanity<br>top |                                |                      |

### DISCLAIMER

While every care has been taken in preparing this material, all plans, details, and specifications contained herein are subject to change without prior notice and do not constitute part of any offer or contract. Furthermore, the Developer reserves the right to alter, deviate, or dispense with the plans and specifications referred to herein.



# AMENITIES

# A MULTI-SENSORIAL JOURNEY OF INTENTION & INSPIRATION

Every amenity in The Velaris Residences North Tower is designed with the clearest intention for a life enhanced by convenience, comfort, security, and artistry. This elegant domesticity offers a sanctuary mediating between our personal lives and the world outside our front doors. An environment that has the power to inspire. And to immediately soothe our senses or subtly switch us to other sides of ourselves.



---

# EXQUISITELY-DESIGNED AMENITIES

## GROUND FLOOR

Arrival Plaza

Five Exclusive Lobbies

Smart lockers

Mail Room

---

## 3<sup>RD</sup> FLOOR PODIUM

Outdoor Garden

\*Business Lounge w/ Meeting Room

\*Creative Studio

\*Golf Simulator Studio

\*Amenities Lift

---

## 5<sup>TH</sup> FLOOR PODIUM

Sculpture Garden

Outdoor Fitness Station

\*Badminton & Pickleball Court

\*Indoor Sento with Wet & Dry Sauna

\*Outdoor Sento

---

## 6<sup>TH</sup> FLOOR PODIUM

Treetop Playground

Camping Grounds

Kids Club

Garden Lounge with Floating Daybeds

Banquet Hall

Pool Bar & Family Deck

Olympic-length Infinity Pool

Party Pool with underwater seating

Kids Pool

\*Lifestyle Gym with Dance & Cycling Studios

---

## 40<sup>TH</sup> FLOOR - VELARIS SKYCLUB

Private Theater

Game Room

Wine Gallery

Cigar Room

Casual & Gourmet Dining Areas

SkyLounge

SkyBar

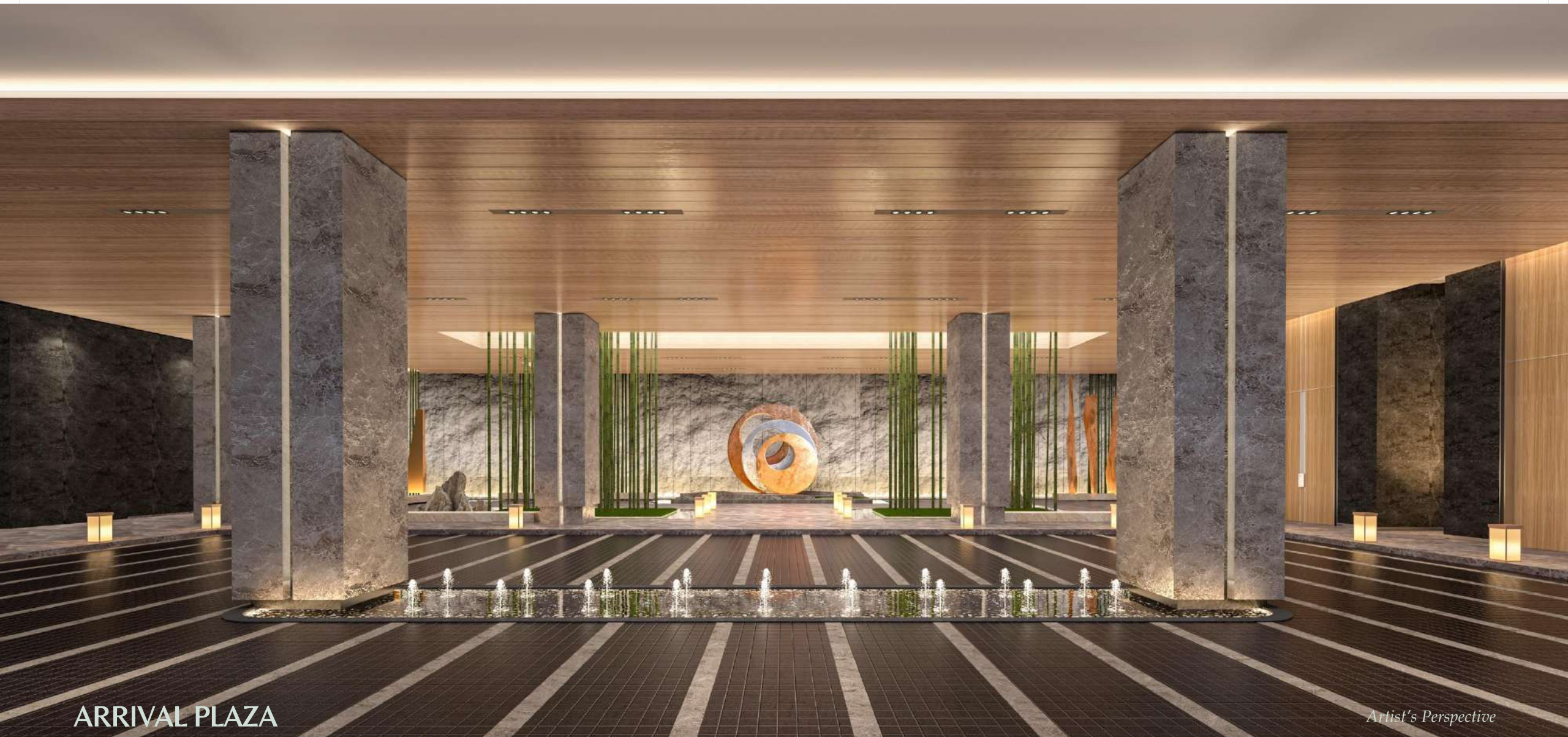
SkyDeck

---

*\*Central Amenities*

## DISCLAIMER

While every care has been taken in preparing this material, all plans, details, and specifications contained herein are subject to change without prior notice and do not constitute part of any offer or contract. Furthermore, the Developer reserves the right to alter, deviate, or dispense with the plans and specifications referred to herein.



ARRIVAL PLAZA

*Artist's Perspective*



MAIN LOBBY

Artist's Perspective



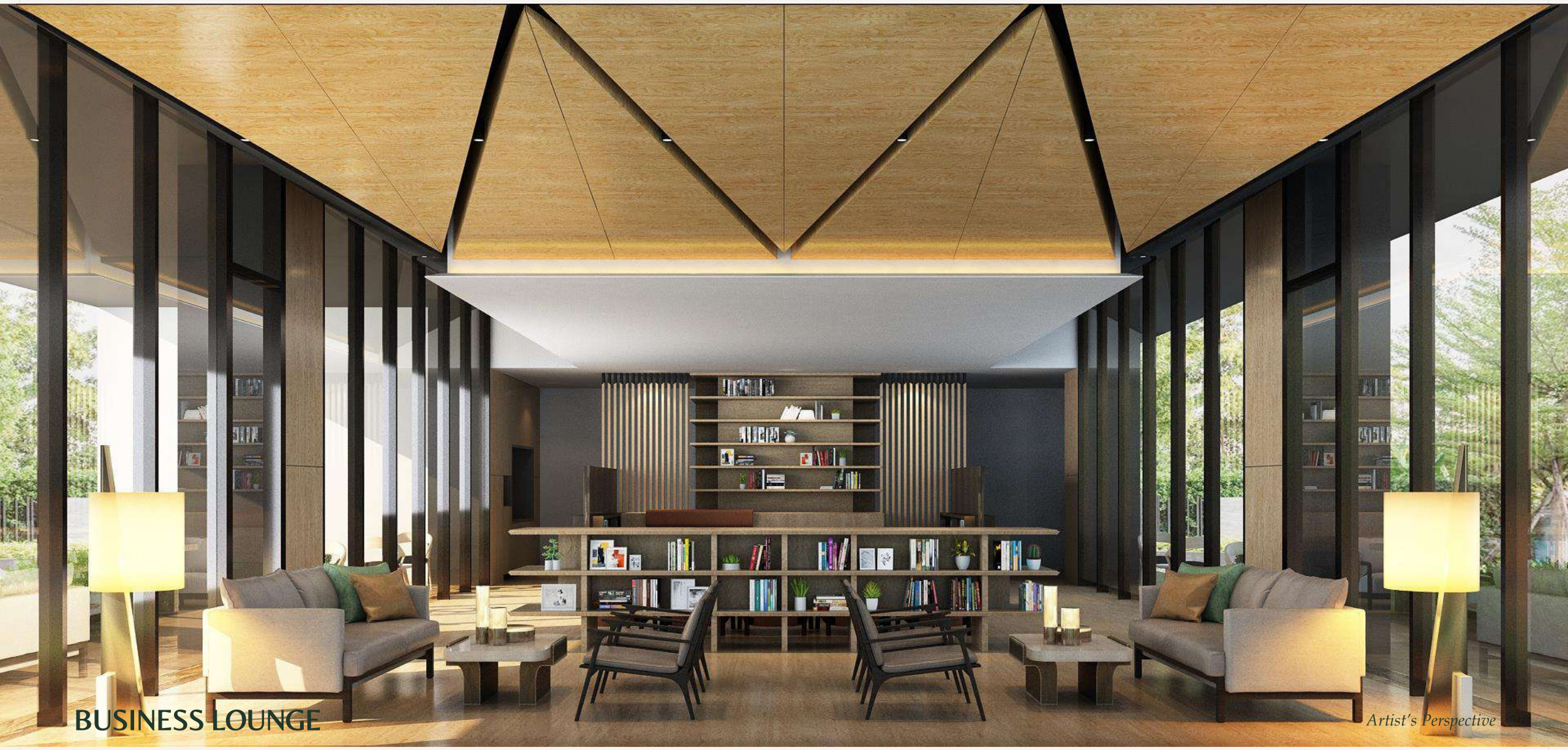
PRIVATE LOBBY

*Artist's Perspective*



GRAND STAIRCASE

*Artist's Perspective*



**BUSINESS LOUNGE**

*Artist's Perspective*



KIDS CLUB

Artist's Perspective



GARDEN LOUNGE WITH FLOATING DAYBEDS

*Artist's Perspective*





TREETOP PLAYGROUND

*Artist's Perspective*



**THE INDOOR SENTO**

*Artist's Perspective*



OUTDOOR SENTO

*Artist's Perspective*



LIFESTYLE GYM & FITNESS STUDIO

*Artist's Perspective*



PRIVATE THEATER

*Artist's Perspective*



WINE GALLERY

*Artist's Perspective*



SKYLOUNGE

Artist's Perspective



OLYMPIC-LENGTH INFINITY POOL

*Artist's Perspective*



# WHEN TRUST IS EVERYTHING

The Velaris Residences is crafted by an inspired team of designers, architects, and builders.

|                                   |                                   |
|-----------------------------------|-----------------------------------|
| CONCEPT ARCHITECT                 | P&T Consultants Pte Ltd           |
| ARCHITECT-ON-RECORD               | W.V. Coscuella & Associates       |
| INTERIOR DESIGN                   | Via Architecture Limited          |
| LANDSCAPING                       | Ecoplan Asia Pte Ltd              |
| PLUMBING & SANITARY ENGINEERING   | NBF Consulting, Inc.              |
| STRUCTURAL ENGINEERING            | Sy <sup>2</sup> + Associates Inc. |
| MECHANICAL ENGINEERING            | L.R. Punsalan and Associates      |
| ELECTRICAL ENGINEERING            | Mario A. Alix Philippines Inc.    |
| PLUMMING & SANITARY ENGINEERING   | NBF Consulting, Inc.              |
| FAÇADE & FAÇADE ACCESS CONSULTANT | ALT Cladding, Inc.                |
| WIND ENGINEERING CONSULTANT       | RWDI Australia Pty Ltd            |

---

# PROJECT TIMELINE

START OF CONSTRUCTION: Q2 2023

START OF TURNOVER: Q4 2028

---



*Artist's Perspective*



*Artist's Perspective*

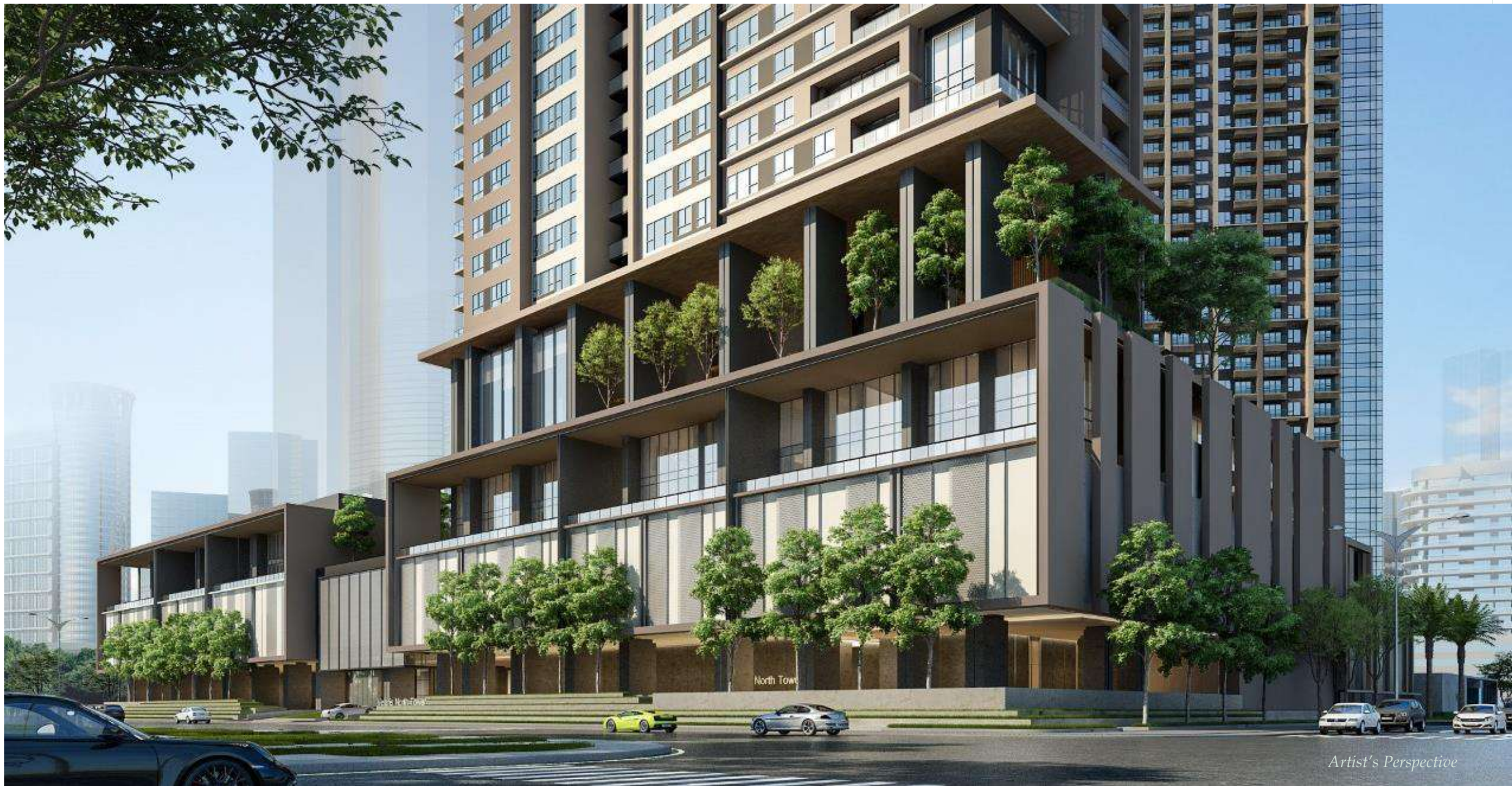


*Artist's Perspective*

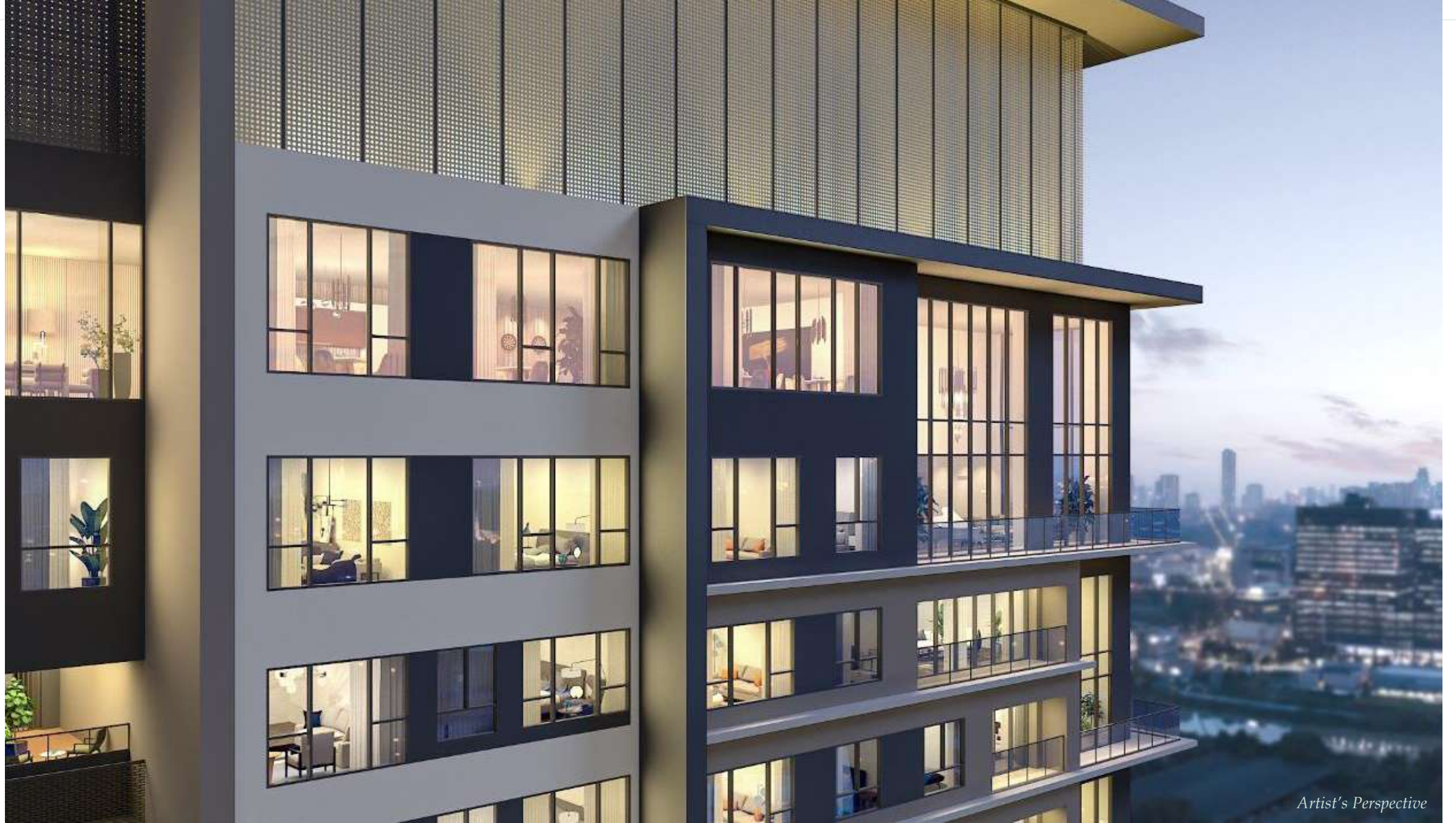


VELARIS

*Artist's Perspective*



*Artist's Perspective*



*Artist's Perspective*







THE  
**VELARIS**  
RESIDENCES  
NORTH TOWER

---

LIFE, REVEALED.

[thevelarisresidences.com](http://thevelarisresidences.com)

DHSUD LTS NO. 0000030